

Mi Piace Italian Restaurant

我喜歡義大利麵

設計者」拾葉建築室內設計 / 葉佳隴

參與者」張惠茹

攝影者」鍾崴至

空間性質」餐廳

坐落位置」臺中市

主要材料」舊杉木板、水泥粉光、磚牆噴漆、OSB 板、鐵件噴漆、灰鏡、塑膠地磚

面積」30 坪

設計時間」2014 年 9 月至 10 月

施工時間」2014 年 11 月至 12 月

Designer」Leaves Architecture Interior Design / Yeh Chia Lung

Participant」Rita Chang

Photographer」Max Chung

Category」Restaurant

Location」Taichung

Materials」recycled fir board, cement paste, paint, OSB board, metal paint, gray color mirror, plastic tile

Size」99m²

Design period」September – October 2014

Construction period」November – December 2014

拾葉建築室內設計

拾葉設計所創造的是一種對生活的態度，與專屬於每個人獨特的風格。人文、品質、藝術、純粹，追求自然的空間與和諧的比例，並搭配著清晰的設計。自始至終不著墨於華麗的裝飾，不浮囂於流行，對設計的態度始終如一，就如拾葉的寓意：學藝作畫，宛若入林振葉，須仰取俯拾，不斷積累。

葉佳隴

雲林科技大學 空間設計系 學士

2013 年 兩岸四地交流大賞 商業空間組 優良設計獎

2014 年 亞洲設計獎 入圍

2014 年 臺灣新秀設計師大賽 佳作獎

Leaves Architecture Interior Design

Leaves Architecture Interior Design looks for a slice of a good taste of life and designs spaces proper to each client's interest. They have six design principles – humanity, quality, art, simplicity, nature and order. The team believes that a good design is not part of a gaudy trend but rather a belief of true life accumulated by life's experiences.

Yeh Chia Lung

B. A. YunTech

2013, Best Design, Cross-Strait Four District Design Forum

2014, Asian Design Award

2014, Advanced Designer Award

Yeh Chia Lung



綠影搖曳的臺中街道上有一間屋齡 40 餘年的傳統街屋，於 2015 年初覆上新面貌後重開門戶；高高掛上富有親切感的店家招牌，好似點出每位到訪饕客的美食主張，瀰漫著使人莞爾的玩味與幽默。這間「我喜歡義大利麵」餐廳的擁有者原本於北部從事科技業，為了一圓擁有自己的餐廳夢想，7 年多前來到臺中耕耘此間義大利餐廳，起初店址設於美村路一帶，直到找到了這棟高三層樓的老街屋，便於 2014 年底將店面移此處，而後交由拾葉設計替餐廳營造新面貌、整治屋況，設計師沿用舊有素材融入創意，帶入餐廳本有的風格與回憶，打造出恬淡溫馨的用餐空間。

小窗窄門 一點故事

主用餐空間中，染上芥黃色的管道變成了壁燈的線路與排煙管，縱橫交錯出有趣的牆面風景；從鑲嵌在餐廳大門上的水管把手、等候區水管繞成的座椅與水管製成的每個餐桌桌腳，管線縱橫在全店角落，連貫了整間餐廳的美感與故事，設計師將平凡的管線化為連結各空間的「縫書線」，串起老街屋十餘載歲月與開店 7 年多來的餐廳記憶。

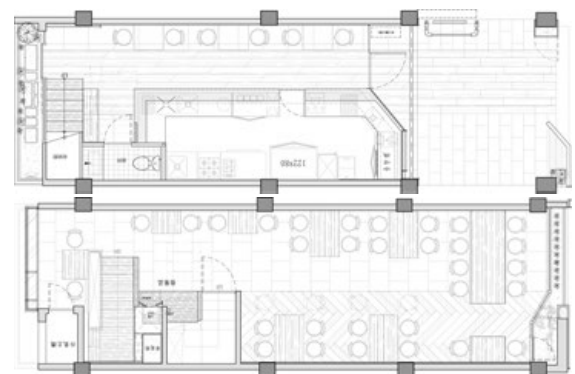
如同週遭街屋一般，建物本也遍布窄小門窗，而設計師選擇將建築舊有的窗框與殘木等元素保留了下來，鑲嵌裝訂，製成用餐空間中最具傳統氣息的角落景色。樓梯轉角的落地窗景中，押花、噴砂玻璃等方格子此起彼落，使陽光折射出不同的角度，在今昔時光的不同媒介中交錯出豐富的光影變化；而對外窗戶則在改為大面積落地窗，銜接外頭綠灌叢與街景，引入白日暖陽灑進室內空間。原本作為建物防盜窗架的黑鐵件，則在刷白後放到了一樓後門天井中，以斜角鑲入，入內賓客迎面便可見，勾起其對深藏之房屋故事的探究與好奇。

新舊面孔 拼貼回憶

老街屋於原始規畫上樓面較為細窄，故設計師運用地坪上的材質對比、俐落的規畫出分區邏輯。一樓以木質地板作為走道，對比水泥地坪的座位區；再以立面之木作鋪裝，打造出每對兩人對座的獨立氛圍。二樓亦藉由相同手法，將不同材質之地坪對比，作為兩排座位的分界，顯得整齊俐落。牆面處理上，設計師則使用純粹手法，營造出空間的樸拙況味；主用餐空間中大面積的磚牆，以半破壞式的敲鑿處理，搭配木作表面上的釘痕、結、剖面紋理，水泥色與實木色彩交隔，精拙之間豐富了對比層次，更帶出空間的自然不羈。另一側顯眼的藍綠色牆面，是整體空間中唯一有作全面包覆的牆面，窗格造型的鏡面牆反射下，不僅開闊了空間感，映襯對面磚牆的斑剝表情之餘，亦加深刻劃出老屋難以仿製的歷史面貌。

1. 落地窗銜接外頭綠灌叢街景，帶進科博館的一片綠意，借景納入室內空間。

1. Big window invites outdoor views to National Museum of Natural Science

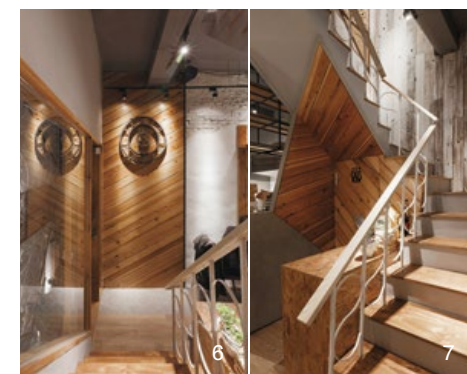


2. 將開放式廚房放置於一樓主空間，木板層架作為展示餐具與食材之用。3. 原架設於二樓防盜窗，刷白後以斜角放置於後門天井中，將傳統元素轉化為空間之中的趣味風景。4. 一樓平面圖。5. 二樓平面圖。6. 設計師以不同的角度鋪裝木條，帶入空間線條變化：水泥牆面上可見磚牆擊面，由二樓衍伸而下，延續空間視覺感受。7. 將洗手間置於樓梯下方，妥善利用空間；樓梯扶手亦可見到刷白的老鐵件等傳統素材。

2. Open-style kitchen and stacking panels 3. Anti-theft grating windows were taken down and relocated as a decorative element 4. The first floor plan 5. The second floor plan 6. Arranging pattern of wood planks on the floor and rustic brick pattern on the surface of the wall 7. Lavatory under the staircase and its interior material treatment

「幾何線條」語彙亦為設計師所用，替空間添增盎然玩味。一張張以水管作桌角的桌面上，可見老木斜角交錯拼成的條紋，若將各桌合併，甚至可以見到一個完整圖案；藏在樓梯間底下的盥洗室，則用老木皮砌成多邊形的角落，斜角延伸向二樓，帶動視覺動線，讓此塊空間不顯窄小，亦形成了空間中頗具意趣的幾何圖畫。

在這間以數十載街屋改建的餐廳之中，設計師嵌入不同的餐廳記憶與老屋面貌，沿用舊有素材融入創意，並以純粹而簡易之手法呈現素材原貌，延續「我喜歡義大利麵」本有的溫馨恬適的風格，交融出此間義大利麵餐廳的新面貌；平實之間有恬淡況味，轉角中的巧思細節耐人尋味。採訪 劉子瑄





8. 牆面以大面積鏟出剖面，展露出磚牆的粗糙紋理，並延伸連貫於複層之間。9.10. 牆面上的管線裝飾兼具壁燈功能，巧妙地將線盒隱藏其中，同時兼顧了往後維修的方便性。



8. Exposed and rustic brick wall surface gives the interior a sense of nature 9.10. Utility pipes and details of fixing boxes

This forty years old shop house was renovated as an Italian food restaurant and reopened to the public in 2015. Mi Piacere Italian Restaurant is owned by a tech-business professional who shifted his career in search of his interests and dreams. The design looked for very simple ways to use old and recycled materials to create a space with a dining at home ambience.

A window view and a story to be told

The main hall forms a particular picture as many utility pipes were painted in mustard color and woven together in an interesting geometrical pattern. The same dimension pipe was used as feet to support the dining tables and chairs in a waiting lounge. It was said that the pipes record every memory of the past and the space is linked by the pipes like threads sewing the old house's past together.

Like the surrounding structure, the building has remain untouched for the past four decades and the old windows and materials were left included the sandy color glass and flower pattern concrete blocks. The interior lighting quality kept the existing melody and the richness of the material surfaces enhance the energy of the space. A large window allows both access to outdoor views and rooms bathed in natural light longer. An anti-thief metal grate was taken down from its original position and placed on a porch to remind every customer of the former life of the old house.

建材分析 Material Analysis

1. 傳統元素：設計師多用刷漆處理展現物件原貌，運用老屋固有的部分素材裝飾空間，如樓梯間的鐵件扶手、防盜窗框等。並將木造窗架與黑鐵窗框保留下來，翻轉重置為店中的落地窗景。2. 木作運用：木地板與水泥的作為走道與座位分界，搭配立面的木材鋪裝，在狹長空間中規畫出分位邏輯；店內的木桌則以杉木條拼接組成。3. 以工業風手法處理素材，表現與精美食材之間的精拙對比。如貫穿複層之間磚牆鏟剖面，以及縱貫其中的水管線路裝飾，皆呈現出空間樸拙不羈的氛圍。

1. Existing elements: many existing components were kept or relocated. The surface of the interior preserves the existing texture of paint. Rustic metal gratings were detached down from their existing location and used as decorative objects. 2. Wood was used extensively. In part it plays mediator between path and lingering zone; it was also used to clad surfaces in many parts 3. There is an ambiguous contrast among the polished, rustic and existing materials. Water pipes were used to reveal an ambience associated with an industrial factory.

溝通重點 Communication Note

原本從事科技業的店主，為了一圓自己開餐廳的夢想，在7年多前來到臺中開了這間「我喜歡義大利麵」餐廳，原本店址位於美村路一帶，為了更舒適的用餐空間，於匯集了各國美食的博館路，找到這棟高三層樓的老街屋，並於2014年底將店面移此處，委託拾葉設計替餐廳全面規劃並整治屋況、營造全新面貌，設計師廣為沿用舊有素材融入創意，呼應「我喜歡義大利麵」餐廳原有的溫暖風格，營造出富有恬淡舒適氛圍的用餐空間。

This restaurant has been in business in Taichung for seven years. To expand further it decided to move to a new location. The new space is ample and situated in a single three story house. The interior design preserves the existing structure and surface cladding while only adding proper new material to enhance an ambience where the past meets the new.



11. 二樓座位區旁藍綠色的牆面，以窗格造型的鏡面牆，映襯對面磚牆的斑剝表情。12. 由老街屋改造成的全新店面，在整治屋況、沿用舊有素材融入創意後，交織出恬淡溫馨氛圍。13. 保留了老屋原本的小窗，倒置拼貼成的富有傳統氛圍的落地窗景。
 11. The second floor window-motif mirror wall reflects the opposite brick wall 12. The restaurant is located in a house renovated with old materials in a creative mood 13. Small windows preserved from the existing structure and renovated into some of the decorative motifs



Old and New

To give the old house a precise spatial department for functional reasons, the design carefully divides the zones by using different material; the first floor wood floor was laid for orientation, while the seating zone is paved with concrete. The wall is mostly covered with wood planks to create a spatial intimacy that one associates with the ambience of an old house. The main dining zone reveals a rustic air with such touches as a piece of brick wall in half ruin and nail scars visible everywhere. A wall facing the ruined surface brick wall is wrapped by mirror that both enhances the rustic feel and forms an ambiguous dialogue between the polished new and rustic old.

A geometrical motif also adds big interest to the space. As noted water pipes were used to support tables and they weave a hidden pattern only visible by grouping several tables together. Inside a lavatory under a staircase one finds a polygon pattern tailored by tree bark and the pattern is visible on the second floor as part of the extension from the first.

The tactic of the design was to truly represent the impression of the past. All the old and new materials meet to embrace an intimate ambience for a family style restaurant. Even though it looks simple with no stylish fashion, the restaurant has a deep affection for the food and interior comfort.

