

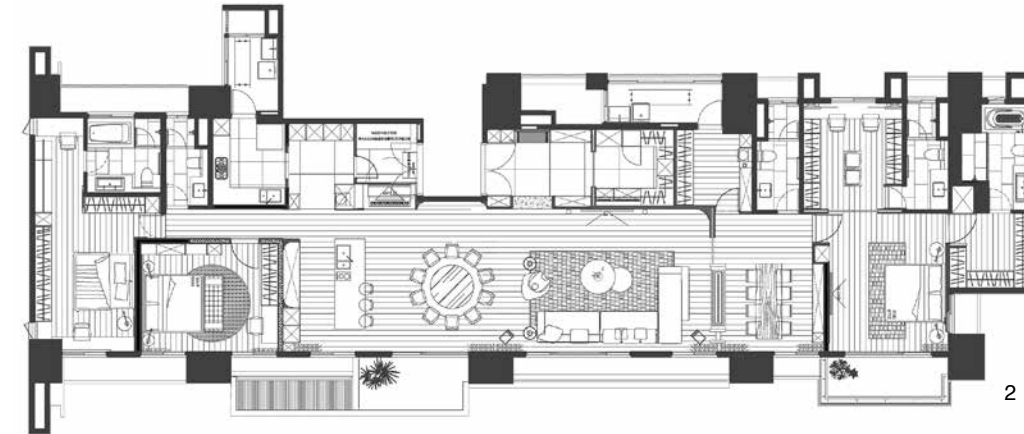
# Mildness 和煦

設計者 | 拾葉建築室內設計 / 葉佳龍 鄭名媛  
攝影者 | WEIMAX STUDIO / 鍾崴至  
空間性質 | 住宅  
主要材料 | 烤漆、特殊塗料、石材、鐵件、實木地板  
面積 | 70 坪

Designers | Leaves Design / Yeh Chia Lung, Cheng Ming Yuan  
Photographer | WEIMAX STUDIO / Chung Wei Chih  
Category | Residence  
Materials | Special paint, stone, metal, solid wood flooring  
Size | 231.4m<sup>2</sup>



此作以弧形語彙貫穿，將光影、材質與動線細膩編織，於窄長格局中建構雅致且充滿意蘊的意境，呈現兼具日常舒適與待客氣度的人文居所。



1. 家人的日常起居以及業主的待客需求必須並存，整體畫面溫馨中不失大氣。2. 平面圖。  
1. The daily routines of the family and the guests entertainment needs must coexist, creating an overall scene that is warm yet grand and generous. 2. Floor plan.

《和煦》坐落於公園周遭，大片落地窗將盎然綠意引入室內，為空間鋪陳明亮而靜謐的氛圍。業主夫妻育有一雙子女，這座宅邸必須承載家人的舒適日常，同時也需兼顧招待訪客時的明亮與質感，有鑑於此，拾葉設計在窄長格局的規範下，透過弧形語彙、光影流動及材質交融，重新定義現代住宅的人文氣質。

## 柔化結構 串聯場域

由於基地本體為長向型，動線配置遂成為關鍵，設計團隊將入口置於偏中心的位置，左右兩側則分別規劃為孩子臥房以及主臥室；玄關銜接客廳與餐廳，讓公區集中開展，並將書房視為緩衝區域，藉此維繫私領域的隱私，這樣的布局兼顧了待客的流暢度，同時確保睡眠環境的安定。

綜觀全貌，最鮮明的設計語彙來自於弧形線條的運用。利用柔和蜿蜒的弧度，巧妙地化解建築中原有樑柱的壓迫感，並在天花板、牆體與家具形體中延伸，化為貫穿全室、極具辨識度的元素。這些弧線既是結構的修飾，也是引導動線、界定場域的媒介，將客廳、餐廳與書房自然串聯，營造優雅而富生機的畫面。

## Yeh Chia Lung, Cheng Ming Yuan



拾葉建築室內設計 / 葉佳龍 鄭名媛  
葉佳龍畢業於國立雲林科技大學室內設計系，鄭名媛則畢業於台南應用科技大學室內設計系。拾葉所創造的是一種對生活的態度，追求自然的空間、和諧的比例，搭配清晰的設計，自始至終不著墨於華麗的裝飾、不浮囂於流行，對設計的態度始終如一，就如拾葉的寓意：學藝作畫，宛若入林採葉，須仰取俯拾，不斷積累。透過嚴謹的標準工學、按部就班的工序步驟，要求工班施作合理的品質，選用綠建材材質，塑造安全居住環境！設計與實品完成的一致性，一如預期中的精緻，創造專屬於空間的獨特味道。重要得獎紀錄包含 TID Award、TINTA 金邸獎、金點設計獎等。

Leaves Design / Yeh Chia Lung, Cheng Ming Yuan

Yeh graduated from the Department of Interior Design at National Yunlin University of Science and Technology, and Cheng graduated from the Department of Interior Design at Tainan University of Technology. What Leaves Design creates is an attitude towards life, pursuing natural spaces and harmonious proportions, complemented by clear design, never indulging in elaborate decoration or pandering to trends from beginning to end. The attitude toward design remains consistent, much like the metaphor of collecting leaves: learning the art of painting is like entering a forest to gather leaves, requiring looking up and down, continuously accruing. Through rigorous standard engineering, step-by-step procedures, requiring the construction team to ensure quality, and selecting green building materials, the designers create a safe living environment. The consistency between design and finished products, with the expected refinement, creates a unique atmosphere exclusive to the project. Notable awards include the TID Award, TINTA Golden Residence Award, and Golden Pin Design Award.

3. 玄關鞋櫃與儲藏間為公區的收納核心，維繫了居家環境的簡潔。4. 期許光線能與材質的質地共構舒緩自在的氛圍，利用中性的色階平衡石材跟金屬的冷冽。5. 以天然石材與圓弧量體構築餐廚區塊，結合光帶細節，展現結構張力。6. 餐桌主燈有機的弧形型態強化了室內的雕塑感，亦成為視覺焦點。

3. The entry and storage room serve as the storage core of the public area, maintaining the tidiness of the home environment. 4. The natural light works together with the material textures to create a cozy and comfortable atmosphere, while neutral tones balance the coldness of stone and metal. 5. The dining and kitchen area is constructed of natural stone and rounded volumes, combined with light strip details to express structural tension. 6. The main dining table light, with an organic curved shape, enhances the sculptural feel of the interior and becomes a visual focal point.



3



4



5

設計師以「光影流動、溫潤人文、材質交融」作為主軸，使室內流露出柔韌的藝術性，在弧線的環抱之中，日常起居與社交情境皆可自然而然地展開，凝聚成溫潤且具生命力的家居篇章。

#### 材質光影的交響

針對材質策略，本作利用質樸石材和塗料作為基底，鋪陳內斂沉穩之肌理，再搭配木皮與金屬的點綴，讓家宅在剛柔之間取得和諧平衡。色彩上則以米色、灰階等低彩度的輕柔中性色為主，避免厚重或冷峻感，使光線在材質間自在流轉，形成一種帶有人文溫度的語境，進一步彰顯團隊在材料比例和色調上的精準拿捏，演繹細膩而耐人尋味的表情。

另外，亦導入 Crestron 智慧系統，整合全室燈光情境，可依照各自需求轉換區域氣氛，因應多元場景彈性應對。餐桌主燈選擇具雕塑感的有機弧形燈具，呼應空間中大量曲線造型，也躍為視覺焦點。燈光計畫不僅注重功能性，更強調光影流動和材質的對話，藉由自然光及人造光源的相互交織，構築白晝與夜晚截然不同的氣韻。

#### 個性化的空間敘事

私人領域延續公區的暖潤基調，並根據家庭成員的特質，錨定專屬調性。主臥以高雅大氣的筆觸描繪畫面，回歸本質令身心獲得深層釋放；女孩房以粉色調搭配展示機能，呈現柔美浪漫之個性；男孩房則利用灰藍色調與俐落櫃體，隱喻他的活力及理性。每間臥房保有個人特色之餘，亦與整體風格映襯，最終勾勒出一幅多層次卻協調的景致，讓家人擁有各自的獨立天地，同時共享彼此的節奏。

設計師總結，狹長格局與結構壓樑是全案最大挑戰，透過重新重整線路、訂立動線，並以弧形消弭限制，突顯室內的敞亮及靈活性，讓美學、功能與科技三者並進，成就一處既能包容生活點滴，又能展現待客氣度的居所。採訪 | 陳映璇



6



7

7. 藉由弧線語彙調和基地既有的樑柱系統，讓結構轉化為明朗優雅的空間印象。Crestron 系統則整合全室燈光，能因應多元場景做出光源調整。8. 地坪的差異無形間暗示了機能轉換，弧形天花則延伸了空間尺度。



8

7. Harmonizing the existing structural elements with the curved vocabulary, transforms spaces into elegant spatial impressions. 8. The variation in floor finishes subtly indicates functional transitions, while the curved ceiling extends the spatial scale.

Located adjacent to the park, "Mildness" features large floor-to-ceiling windows that bring the lush greenery indoors, creating a bright and serene atmosphere throughout the spaces. The homeowners, a married couple with two children, required this residence to accommodate the family's comfortable daily life, also ensuring brightness and quality when entertaining house guests. Under the constraints of a narrow and elongated layout, Leaves Design redefined the humanistic qualities of a modern residence through the curved form, the flow of light and shadow, and the integration of materials.

#### Soften the structure and link the spaces

Given that the existing site is elongated, the flow of circulation becomes crucial. The design team placed the entry in an off-center position, with the left and right sides allocated to the children's bedrooms and the master bedroom, respectively. The entry vestibule connected the living and dining room, allowing the public areas to be centralized, while the study serves as a

transition zone to maintain the privacy of the private areas. The plan ensures smooth interaction with guests while also ensuring a peaceful environment for sleeping.

The most distinctive design language comes from the use of curved lines. By employing gentle and winding curves, the oppressive feeling of the existing structure is cleverly alleviated, and these curves extend through the ceiling, walls, and furniture forms, becoming highly recognizable elements throughout the entire space. These curves also serve as a medium to guide movement and delineate spaces, naturally connecting the living room, dining room, and study, thereby creating an elegant and vibrant scene. The designer uses 'flowing light and shadow, warm humanistic touches, and material fusion' as design theme, allowing the interior to exude a soft artistic quality. Within the Embraced by the Curves, both daily living and social interactions can unfold naturally, merging into a warm and vibrant chapter of home life.



9

10

### The Symphony of Material and Light

Regarding the material strategy, the project employs simple stone and paint as foundation, presenting a restrained and steady texture, complemented by touches of wood veneer and metal, allowing the home to achieve a harmonious balance between firmness and softness. In terms of the color scheme, it primarily features gentle neutral tones with low saturation, such as beige and grayscale, avoiding a heavy or austere feel, allowing light to flow freely across the materials and creating a context imbued with a sense of warmth.

Additionally, a Crestron smart system was introduced to integrate the lighting scenarios throughout the space, allowing each area to adjust according to specific needs or flexibility. A sculptural organic curved fixture above the dining table echoes the abundant curves in the space and also becomes a visual focal point. The lighting design not only focuses on functionality but also emphasizes the interplay of light and shadow and the dialogue between materials, through the interweaving of natural and artificial light sources, creating different atmosphere between day and night.

### Personalized spatial narrative

The private areas continue the warm and gentle tone, tailored to the characteristics of each family member to establish a personalized ambiance. The master bedroom has an elegant and grand charm, returning to its essence and allowing the body and mind to achieve deep relaxation. The girl's room features a pink color scheme with functional display elements, presenting a soft and romantic personality; the boy's room, on the other hand, uses gray-blue tones and sleek cabinets, implying his energy and rationality. Each bedroom maintains its own unique character while also complementing the overall style, ultimately creating a multi-layered yet harmonious scenes that allow family members to have private spaces while sharing each other's rhythms.

The designer concluded that the narrow and elongated layout, along with the existing structural elements, posed the greatest challenge to the project. By reorganizing the plan layout and defining the circulation by using curved forms to eliminate constraints, the design highlights the spaciousness and flexibility of the interior. Allowing aesthetics, functionality, and technology to progress together results in a dwelling that can accommodate the nuances of daily life yet also demonstrate hospitality.

### 建材分析 Material Analysis

1. 大面積的背景利用質樸的石材及細緻塗料打底，局部搭配金屬和木皮。
  2. 藉由比例與色階的拿捏，佐以光影的漫射，讓室內氣息協調單純。
  3. 軟件部分與硬裝相應，採弧形和米暖色系為核心。主要選擇 NATUZZI 義大利家具營造現代俐落的畫面。
  4. 以 Crestron 系統整合燈光，能依情境自由切換模式。
1. Large areas of the background use rustic stone and finely applied paint as a base, and selective areas are accented with metal and wood veneer.
  2. Carefully balanced proportions and color shades, complemented by the diffusion of light and shadow, create a harmonious and simple interior atmosphere.
  3. The finishes correspond to the design theme, focusing on curved shapes and warm beige tones. NATUZZI Italian furniture was mainly chosen to create a modern and sleek appearance.
  4. The integrated Crestron lighting control system allows the atmosphere to be freely switched according to different scenarios.

### 溝通重點 Communication Note

1. 住家鄰近業主的工作地點，偶爾需招待客戶至家中，因此公共空間的開闊度與精緻細節格外重要。
  2. 由於基地為窄長形，盡可能將過道與公區整合在一起。
  3. 藉圓弧造型弱化樑柱，細緻的線條堆疊形塑優雅且充滿活力的感受。
  4. 全案講求美學、機能與智能系統的結合，提升居住的舒適和便利。
1. The residence is located near the owner's workplace, and there are occasions to entertain clients at home. Therefore, the openness of the public spaces and the refined attention to detail are particularly important.
  2. Due to the existing narrow and elongated site condition, efforts were made to integrate the corridors with the public areas as much as possible.
  3. The use of curved shapes serves to soften the beams and columns, while the meticulous layering of lines shapes an elegant and vibrant ambiance.
  4. The project emphasizes the integration of aesthetics, functionality, and intelligent systems to enhance residential comfort and convenience.

9. 軟件的暖色調扣合設計主軸，精巧的細節打造了協調柔和的情境。
  10. 鏤空的量體帶來了穿透流動的效果，順暢地銜接起各個場域。
  11. 書房作為公私領域交界的中介區，以半開放配置串聯動線，兼具過渡緩衝和彈性。
9. The warm tones of the furnishings align with the design theme, and the meticulous details create a harmonious and gentle atmosphere.
  10. The hollowed-out volume create a sense of flowing permeability, effortlessly connecting different areas.
  11. The study serves as an intermediary zone between public and private spaces, the semi-open layout links circulation paths, providing both transitional buffering and flexibility.



11



12

13



15



16



17



14

12.13. 主臥室延續公區的溫暖基調，在光影與質地間描摹出靜謐境地。14. 主臥擊劃男女主人的專屬更衣室。15. 男孩房的灰藍色系簡約俐落，與居者的個性相符。16.17. 女孩房運用粉色系表現清新溫婉的氣息。  
 12.13. The master bedroom continues the warm design tone, depicting a tranquil space through light, shadow, and texture. 14. The master bedroom is designed with separate walk-in closets dedicated to the male and female owners. 15. The boy's room features a simple and sleek gray-blue color scheme, matching the occupant's personality. 16.17. The girl's room uses pink tones to convey a fresh and gentle atmosphere.