



左圖：公領域以圓潤與筆直的線條作為設計主軸，以屋主偏好的石材定錨牆面設計



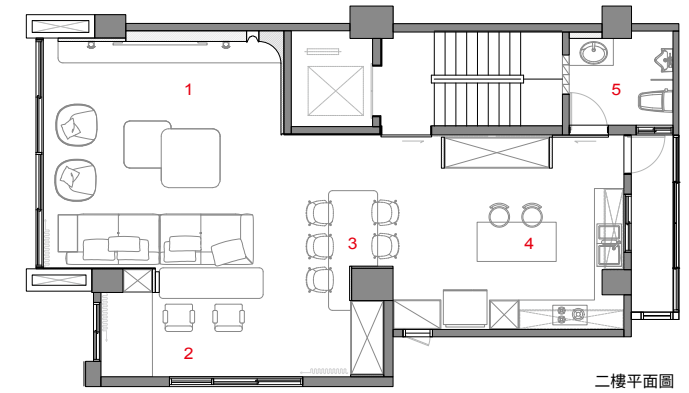
S' House, Taichung

台中S宅

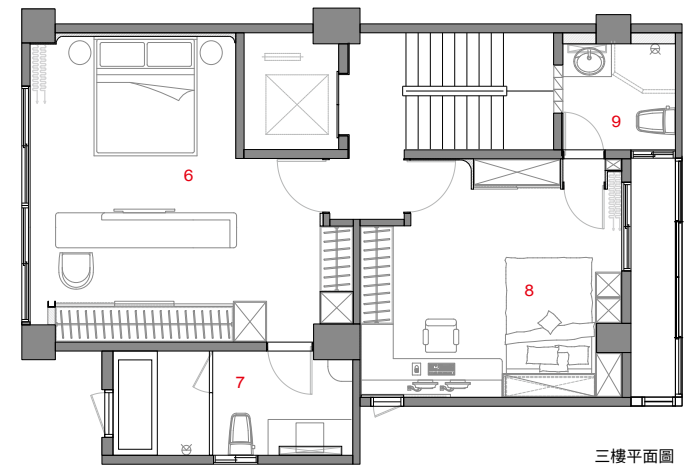
拾葉建築室內設計 Leaves Design

主要設計：葉佳隆·陳姿吟·余秉鴻
 空間面積：83.9 m²
 主要建材：石材·木材·礦物塗料·鐵件
 座落位置：台灣台中
 影像：威米總空間攝影
 採訪：何雯意
 核稿：陳宗堂

1. 客廳 2. 閱讀區 3. 餐廳 4. 廚房 5. 盥洗室 6. 主臥室
 7. 主衛浴 8. 臥室 9. 衛浴



二樓平面圖



三樓平面圖

「復歸於樸」是屋主奮鬥多年後最想抵達的日常：回到家中，並與家人好好生活。面對基地面寬開闊、後段卻急遽收束所形成的三角形格局，設計團隊不急著堆疊設計，而是在既有骨架不大幅更動的前提下，以局部隔間與櫃體整合重新校準動線與機能，讓採光得以保留、視線保持穿透，空間回到流暢的秩序。

公領域以圓潤與筆直的線條作為設計主軸。客廳以屋主偏好的石材定錨電視牆設計，紋理一路延展至圓角收邊，並以右側造型線條串聯起走道動線與弧形天花，讓尖銳轉折被自然收束；相對地，動線與機能區則以直線語彙營造簡潔氛圍。同時，機櫃與線路被收進背牆與天花中，讓立面回到俐落的水平切線。進入後段餐廳，餐桌固定並內嵌於柱體之中，銜接著開放櫃與光帶，將收納、展示與光氛圍一次整合，讓後段受限尺度能更有效率地被使用。地坪選用上亦以石材鋪陳，有效強化公領域極簡俐落的整體感。

私領域延續著公領域簡潔且明亮的定調，並依各家庭成員的偏好，在材質、線條與光的層次上做出細微差異，讓每個人都能擁有貼合自身節奏的放鬆角落。譬如，男主人偏好的石材質融合至床前電視主牆之中；女主人則偏好侘寂感的柔霧塗料，並以弧形家具配置柔化臥室氛圍，使空間更為溫潤。地坪轉以木材銜接私密域，腳步觸感與視覺溫度隨之放慢，為休憩帶來更安定的背景。設計不以強烈風格清晰劃分場域，而是透過比例拿捏、收邊細節與光的層次，整合不同喜好於統一的基調之下，讓各房間各自成立，仍與整體風格保持連貫。

光線配置上以內嵌鋁條、線性燈與間接光為主，由此取代外露燈具，讓照明成為修飾尺度、銜接轉折的工具，讓光線成為家中的點綴。在外寬內窄的限制之中，家不靠語彙堆疊取勝，而是細緻處理每一次轉折、與每道光線，讓居者在此感受到安定、明亮，以及被細心照顧過的日常。

"Returning to simplicity" captures the life the homeowners longed for after years of hard work. Confronted with a triangular plan—wide at the front and narrowing toward the rear—the design team worked largely within the existing structural framework, circulation and functions were recalibrated through selective partitions and integrated cabinetry. This strategy preserves daylight, maintains visual continuity, and restores the interior to a fluid spatial order.

The public areas are defined by rounded forms and clean straight lines. In the living room, a stone-clad TV wall responds to the homeowner's material preference. Its veining extends into softly rounded edges, while sculpted lines on the right side connect to a curved ceiling, allowing sharp transitions to dissolve naturally. In contrast, circulation routes and functional zones are articulated through linear geometries, reinforcing a composed atmosphere. Equipment cabinets are concealed within the rear wall and ceiling, returning the elevations to crisp horizontal lines. Toward dining area, the table is fixed and embedded into a structural column, extending into open shelving and integrated lighting strips. Storage, display, and ambient light are consolidated into a single system, enabling the constrained rear portion of the plan to be used with greater efficiency. Stone flooring continues throughout the public zone, reinforcing a minimalist and decisive spatial character.

The private areas maintain the same clarity, while subtle variations in materials, lines, and lighting respond to the family's preferences. Stone surfaces reappear in the TV wall at the foot of the bed in the main bedroom, while other rooms adopt softer, mist-finished coatings inspired by a wabi-sabi sensibility, paired with curved furniture to create a warm, relaxed atmosphere. Flooring transitions to warm wood in these private spaces, slowing both the tactile and visual rhythm and providing a calmer backdrop for rest.

Lighting uses recessed aluminum channels, linear fixtures, and indirect illumination in place of exposed luminaires. Light becomes a tool for refining scale and mediating transitions rather than a visual statement. Within the constraints of a plan that narrows inward, the home achieves clarity through precision—where every turn, proportion, and beam of light is resolved just enough to support a life that feels calm, bright, and thoughtfully cared for.



左圖·右圖：光線配置上以內嵌鋁條、線性燈與間接光為主，讓光線成為家中的點綴

